



A & F WOOD PRODUCTS, INC.

5665 Sterling Drive Howell, MI 48843

Phone: 517.545.5811 Fax: 517.545.5633 Toll Free: 800.367.3293

www.afwood.com

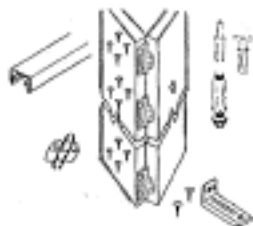
Bifold Door - 30 lbs. Assembly and Installation Instructions

For Bifold 4 Panel Sets

Set Contains

- 1-Track with Two Track Sockets
- 2-Bottom Pivots
- 2-Top Pivots
- 2-Jamb Brackets
- 2-Top Roller Guides
- 1-Snugger
- 2-Plastic Knobs
- 6-Bifold Non-Mortise Hinges
- 1-Set Door Aligners
- Necessary Fasteners

*Track is less than opening to reduce need to cut track.

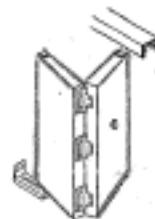


You Supply

Door Panel(s) as specified on the package chart,
Screwdriver, Tape Measure, Drill, Clamp, Hammer.

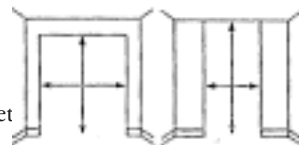
How to Install your Bifold Doors

Please read the complete instructions carefully before you start installation.
All instructions apply to any size of bifold door installation.
The same instructions also apply to all type of door panels.

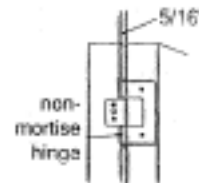


1. Door sizing

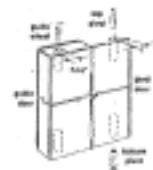
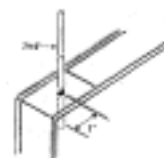
Height – Make doors 1 5/8" less than the net Opening height. Width – Divide net opening width by the number of Door panels (2 or 4) and subtract 1/4" to determine the net door panel width. For example: A 30" opening for a two door bifold requires door panels that are 14 3/4" wide. ($30 \div 2 = 15 - 1/4 = 14 3/4$). A 48" opening with 4 panels requires door panels that are 11 3/4" wide ($48 \div 4 = 12 - 1/4 = 11 3/4$).



- 2. Install non-mortise hinges to edge of doors 1" or more in thickness. Place panels of folding doors side by side with a 5/16" spacer between the panels and clamp together. Locate hinges approximately 6" from each end of doors and at their centers. The leaf position on the door is optional. Using the hinge as a template drill 3/32" holes approximately 7/8"

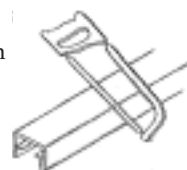


- 3. Drill 7/16" diameter holes 1 7/8" deep for pivots and guides on center and 1" from the edge of door.



- 4. Locate the pivots and guide as shown. Tap parts into the holes with light hammer blows directly on the top of the pins.

- 5. Cut Track. If necessary, cut track to at least 1/8" less than the width of the finished opening. Use a fine tooth hack saw.





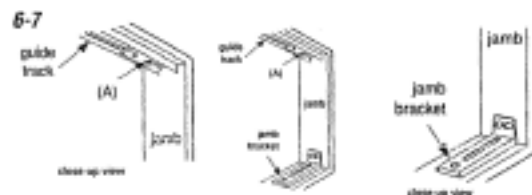
A & F WOOD PRODUCTS, INC.

5665 Sterling Drive Howell, MI 48843
Phone: 517.545.5811 Fax: 517.545.5633 Toll Free: 800.367.3293
www.afwood.com

Bifold Door - 30 lbs. Assembly and Installation Instructions (cont'd)

6. Top pivot bracket in each end of track should have pivot hole (A) closet to jamb. Fasten track to header. On two-door unit track should be firmly against jamb at guide end of track. Use track as template and mark screw locations. Drill 1/8" pilot holes to approximate length of screws.

7. Place jamb bracket so enter line is plumb with center line of track. Bottom leg should rest firmly on carpet or floor. To fasten jamb bracket, drill 7/64" pilot holes to approximate length of screws and apply fasteners.



8. To install hinged pair of doors, place pivot pin (B) in hole, lift doors (compressing pin spring) and seat bottom pin into jamb bracket slot. Compress wheel pin, swing door under track and release wheel into track channel.



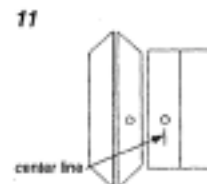
9. Press self centering (4-dr) snugger into track between pairs of doors in 4 panel installations, or press (2-dr.) snugger into track between guide wheel and jamb in 2 panel installations.



10. Horizontal Adjustment: Use Phillips screw driver to reposition top pivot bracket © in or out. Lift hinged pair of doors slightly to clear slot in bottom jamb bracket, move adjusting bolt in or out until doors are plumb with jamb, and reseat bolt in bracket slot. Adjust to obtain 1/8" gap between pairs of doors at center of opening (or doors and jamb in 2-door opening). Vertical Adjustment: Lift doors again and rotate adjusting wheel (D) clockwise to raise doors, counterclockwise to lower them. Adjust doors upwards for minimum clearance at the header. Reseat adjusting bolt in bracket slot being careful not to change horizontal positioning. Do not attempt to turn wheel with teeth engaged in the bracket.



11. To place knobs, drill 7/64" holes in center of guide doors about 36" from floor.



12. For 4-door installation only. Attach aligners to back of guide doors, 12" from floor. Adjust in or out in slatted holes until doors "snap" closed. Tighten screws. Drill 7/64" pilot holes to a depth approximately the length of screws.

