



# A & F WOOD PRODUCTS, INC.

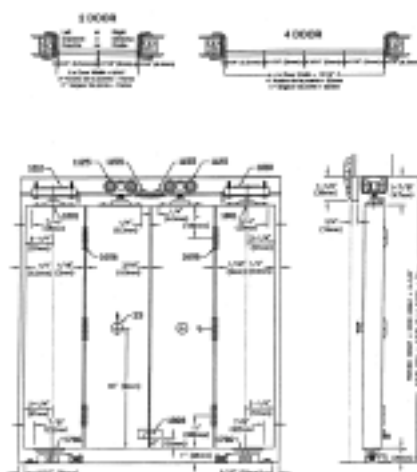
5665 Sterling Drive Howell, MI 48843  
 Phone: 517.545.5811 Fax: 517.545.5633 Toll Free: 800.367.3293  
 www.afwood.com

## Bifold Door - 75 lbs. Assembly and Instructions

### How to Install your Bifold Doors

Please read the complete instructions carefully before you start installation. All instructions apply to any size bifold door installation. The same instructions also apply to all type of door panels.

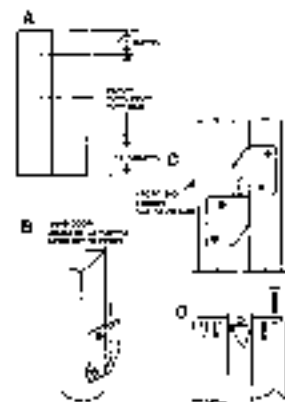
Prepare Opening Carefully: Make sure corners are square, header is level and jambs are straight.



1. Cut Track to fit Opening Width and fasten to header jamb with 1-1/4" Pan Head Screws.  
 Note: Insert Parts in Track Before Mounting



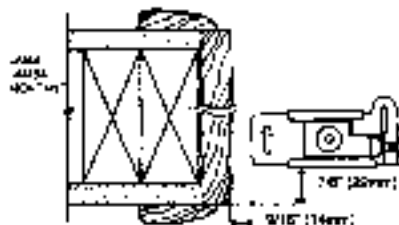
2. Fasten Hinges to Doors (1606). (A) Stand pivot door on edge and mark a line at 7" from top of midpoint and 11" from the bottom. (B) Attach hinge half with pin at marks (hinge pin pointing up) with 1" flat head screws. (Note: with nylon knuckle at hinge flush against back side of door). (C) Place second door back-to-back against first door with top of doors even. Slip hinge half without pin over hinge half with pin. (D) Attach hinge half without pin to door.



3. Fasten Pivot Plates to top and bottom of doors as shown.  
 Note: 1121 nylon locking arm must open towards rear of opening.



4. Fasten 1011 Floor Bracket to floor 9/16" from jamb face and 7/8" from jamb edge. Remove floor bracket and proceed to Step 5.





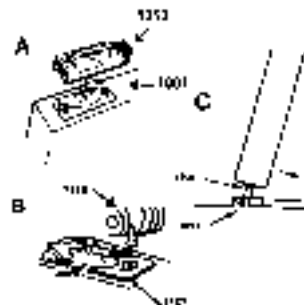
# A & F WOOD PRODUCTS, INC.

5665 Sterling Drive Howell, MI 48843

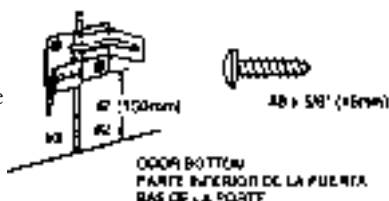
Phone: 517.545.5811 Fax: 517.545.5633 Toll Free: 800.367.3293

www.afwood.com

5. Hang Doors by (A) inserting 1001 Top Pivot into 1010 Top Pivot Socket. Lock into place with locking lever. Then (B) insert 1125 Hanger into 1121 Door Plate. Lock into place with locking arm. (C) Tilt doors slightly to allow 1011 Floor Bracket to slide under 1706 Bottom Pivot. Insert 1706 into hole of 1011. Reattach 1011 to floor

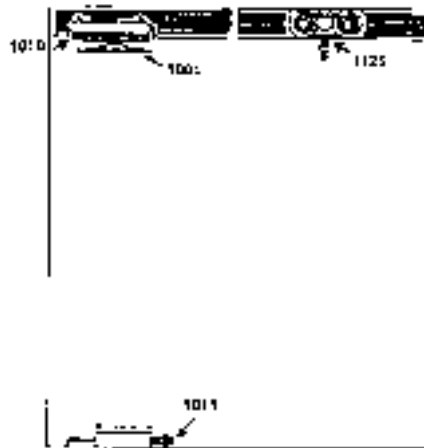


6. Mount Aligners (1808) on back side of lead doors. (4 Door Sets Only)

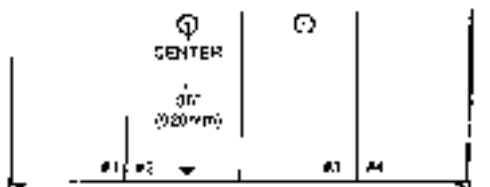


7. Check for Proper Door Operation: clearance, alignment, adjustments, etc. should be made at this time. If adjustments are required, they can be made at Track Pivot Socket (1010) and Floor Bracket (1011). Setting, door warpage and other uncontrollable conditions may require later areadjustments.

Note: Doors must be parallel with track for proper operation.



8. Attach Knobs drill 3/16" hole 36" from bottom, and in center of #2 and #3 doors.



9. ADJUST SNUBBER (1155) Close doors, slide 1155 until it touches 1125. Open doors. move #1155 1/8" closer to #1125 ant tighten.

